

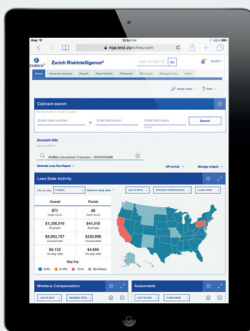
# Zurich RiskIntelligence

Helping you to better understand the risk challenges of your changing world



## Zurich RiskIntelligence is now tablet-ready!

Your business is mobile, so we've designed Zurich RiskIntelligence to meet your needs. Now, access the risk analysis you need anytime, anywhere, on your iPad® or similar tablet device.



For over 20 years, **Zurich RiskIntelligence** has been one of the insurance industry's most important customer risk information platforms, helping risk managers capture, analyze and apply cost-saving insights. Along the way, enhancements based solely on real-world user recommendations have helped improve the customer experience.

So, after making Zurich RiskIntelligence one of the most customer-focused and content-rich Risk Management Information System (RMIS) tools of its kind in the insurance industry, what's next? Simple. Making its look and functionality even more effective and user-friendly.

## Delivering an enhanced customer experience

- The graphic layout of Zurich RiskIntelligence is reformatted to make it "tablet-friendly" for mobile devices, as well as visually more inviting and contemporary.
- Visual "clutter" has been reduced with new icons for most key functions, including a prominent "Alert" icon to draw attention to important updates.
- Display preferences can be customized and managed to better meet your specific needs, including your desired views of Key Performance Indicators (KPIs) on a state-by-state basis.
- You can access Zurich RiskIntelligence using any of three major Internet browsers: Google Chrome, Firefox and Internet Explorer.
- Customizable and ad hoc reporting formats have been further streamlined to help provide more intuitive, easier-to-access risk management insights.

## Learn more about Zurich RiskIntelligence

Zurich RiskIntelligence is a secure application. If interested in utilizing the system, please contact your Underwriter or Customer Service Executive. If you do not have contact information for either position, please email your account name and policy number(s) to:

[ask.riskintelligence@zurichna.com](mailto:ask.riskintelligence@zurichna.com)



Discover a world of Zurich solutions and risk insights in the Zurich Virtual Literature Rack.

Visit [zurichvlr.com](http://zurichvlr.com) or download the free app to your iPad from the App Store.



## Building on a foundation of service and insights

- Relevant risk and claims information updated on a daily basis
- Analysis provided by one of the industry's leading analytical tools
- Customizable portal allowing you to decide what key performance indicators (KPIs) you need
- More than 100 potential report formats for you to format and customize as needed
- Convenient "dashboard" exhibits of claims data providing immediate, high-level insights
- User diary utilizing customized checklists and deadlines based on your user preferences

## A suite of industry-leading risk data solutions

Zurich RiskIntelligence is one of the industry-leading suites of risk data and analysis tools delivering different levels of complexity and scope. This can allow qualified customers and brokers the ability to choose the approaches most relevant to their business needs.

### Zurich RiskIntelligence Enterprise

A combination of risk management information reporting and analysis tools of particular relevance to large organizations with significant claims frequency and complexity.

### Zurich RiskIntelligence Express

Easy-to-use "point and click" technology allows users to view selected risk information at a glance and generate reports for selected data on demand. Designed for companies with moderate loss frequency and less complex claims.

### Zurich RiskIntelligence Exchange

Imports and maps loss data from other carriers, aggregating the external data with the customer's Zurich risk management information. Appropriate for large customers with multiple carriers who want to aggregate their loss data into consolidated reports.

### RiskACCESS

A web-based application giving qualified customers a direct line into Zurich's claims management system to view their real-time claims information. Intended for qualified customers who simply desire on-demand claims monitoring without the need for more detailed reports.

### RiskImage

Fast, easy access to scanned claims file documents through the Zurich RiskIntelligence homepage for qualified customers who want to closely monitor their claims on an ongoing basis.

### Zurich RiskIntelligence data can help you:

- Identify and understand factors and trends driving insured losses
- Gain insights into ways to help reduce accidents and injuries
- Reduce lost productivity, cash flow and profits
- Achieve greater control over your total cost of risk

Once you have your risk analysis and relevant loss data in hand, your Zurich Customer Information Services representative can help you identify trends suggesting risk issues that you may need to address. Based on the insights revealed in your risk data, Zurich Risk Engineering professionals can help you identify steps you can take to help mitigate and reduce your risks.

## Zurich

1299 Zurich Way, Schaumburg, IL 60196-1056  
800 382 2150 [www.zurichna.com](http://www.zurichna.com)

This is intended as a general description of certain types of risk engineering services available to qualified customers through The Zurich Services Corporation. The Zurich Services Corporation does not guarantee any particular outcome and there may be conditions on your premises or within your organization, which may not be apparent to us. You are in the best position to understand your business and your organization and to take steps to minimize risk, and we wish to assist you by providing the information and tools to help you assess your changing risk environment.

Insurance coverages are underwritten by individual member companies of Zurich in North America, including Zurich American Insurance Company. Certain coverages are not available in all states. Some coverages may be written on a nonadmitted basis through licensed surplus lines brokers. iPad is a trademark of Apple Inc.

©2018 The Zurich Services Corporation. All rights reserved.

A1-112008539-C (04/18) 112010803



**ZURICH**®