

Help protect against life's messy accidents

To keep your vehicle looking showroom new, you can choose an environmental protection plan, or EPP. With an EPP, a sealant is applied to the exterior of your new vehicle, to help shield it against harmful environmental elements like acid rain, tree sap, bird waste, road salt, and more. When protection is applied to your leather and fabric interior, it helps reduce the signs of aging and protect against food spills, make up, chewing gum, and even pet stains.



Exterior coverage



Interior coverage

Benefits of EPP:

Exterior:

- Seals and protects paint surfaces
- Protects against weather-induced fading and loss of gloss
- If EPP fails to perform, the damaged portion of the vehicle will be treated.
- Rental reimbursement should vehicle need treatment
- Renewable
- Transferable to next owner

Interior:

- Makes clean up easy
- Creates a barrier against stains
- Delays fading
- Extends life of fabric seats and carpet
- Protects against premature aging of leather and vinyl

> [Click here to view legal disclaimer](#)

Help protect against life's messy accidents

To keep your vehicle looking showroom new, you can choose an environmental protection plan, or EPP. With an EPP, a sealant is applied to the exterior of your new vehicle, to help shield it against harmful environmental elements like acid rain, tree sap, bird waste, road salt, and more. When protection is applied to your leather and fabric interior,

What does exterior EPP cover?



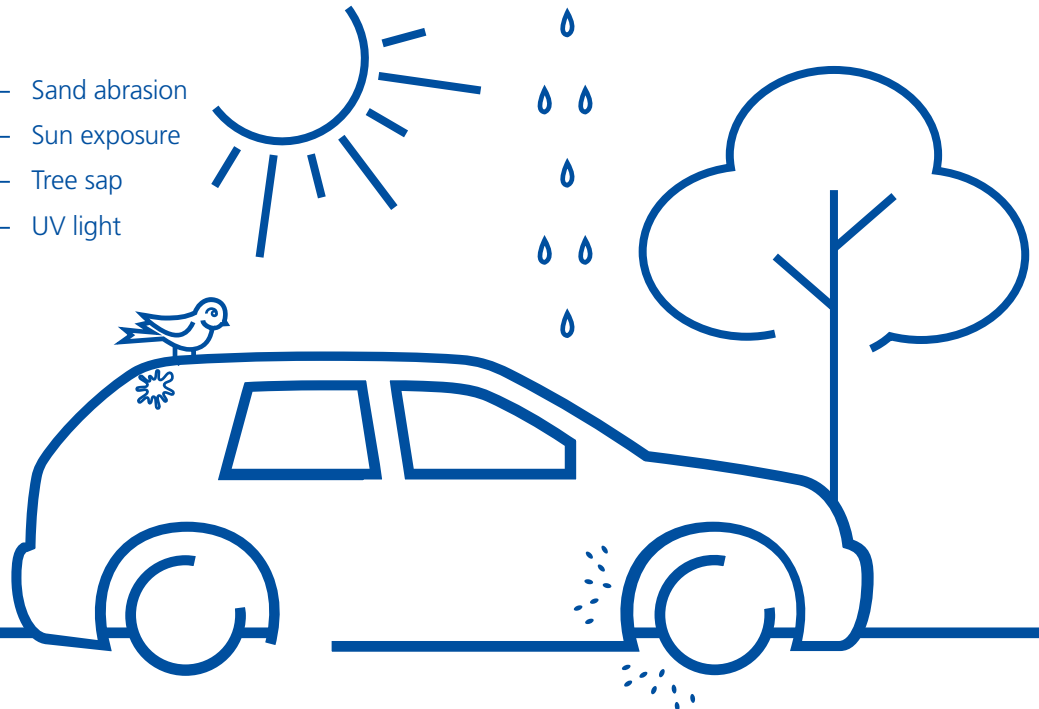
What is covered?

- Accidental paint overspray
- Acid rain
- Bird waste
- De-icing chemicals
- Hard water
- Industrial fallout
- Insects
- Jet exhaust
- Rail dust
- Sand abrasion
- Sun exposure
- Tree sap
- UV light



What is not covered?

- Damage due to misuse of vehicle
- Damage to inside of truck bed
- Flaking, cracking or separation of paint
- Metal plate or chrome trim damage
- Parts, decals or equipment installed after the factory
- Untreated repaired or repainted parts



- Protects against premature aging of leather and vinyl

> [Click here to view legal disclaimer](#)

Help protect against life's messy accidents

To keep your vehicle looking showroom new, you can choose an environmental protection plan, or EPP. With an EPP, a sealant is applied to the exterior of your new vehicle, to help shield it against harmful environmental elements like acid rain, tree sap, bird waste, road salt, and more. When protection is applied to your leather and fabric interior,

What does interior EPP cover?



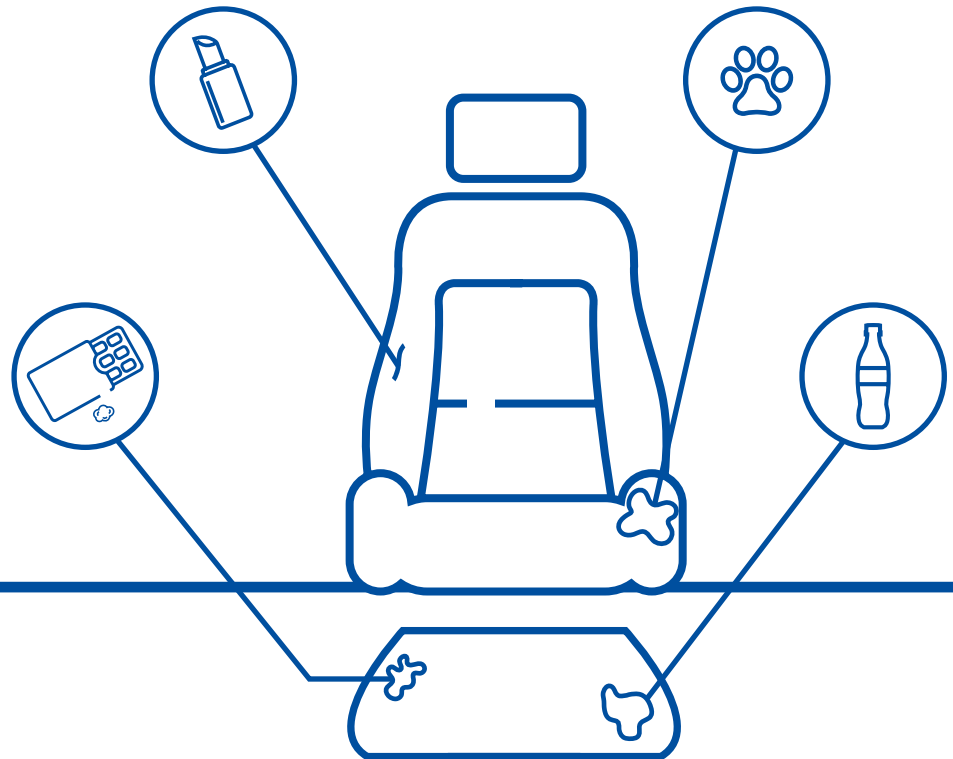
What is covered?

- Blood
- Chewing gum
- Crayons/ink
- Dye transfer from clothing
- Food/beverage spills
- Loose seams
- Make-up
- Oil
- Pet stains
- Urine
- Vomit



What is not covered?

- Corrosive materials
- Headliner
- Manufacturer material defects
- Odor removal
- Water stains



- Protects against premature aging of leather and vinyl

> [Click here to view legal disclaimer](#)

Help protect against life's messy accidents

To keep your vehicle looking showroom new, you can choose an environmental protection plan, or EPP. With an EPP, a sealant is applied to the exterior of your new vehicle, to help shield it against harmful environmental elements like acid rain, tree sap, bird waste, road salt, and more. When protection is applied to your leather and fabric interior, it helps reduce the signs of aging and protect against food spills, make up, chewing gum, and even pet stains.



Exterior coverage

Legal disclaimer



This brochure gives a general overview of environmental protection plans, including Zurich Shield® Environmental Protection, available through Universal Underwriters Service Corporation (UUSC), an individual member company of Zurich in North America. Certain restrictions and exclusions apply, and coverages may differ in certain states. Please consult your environmental protection plan contract for detailed terms and conditions. Zurich Shield® is a registered trademark of Zurich American Insurance Company. Automotive Protection Systems, Inc. is the issuing provider, administrator and warrantor of Zurich Shield®. Automotive Protective Systems is not affiliated with Zurich American Insurance Company.

©2017 Zurich American Insurance Company. All Rights Reserved.

Benefits of EPP:

Exterior:

- Seals and protects paint surfaces
- Protects against weather-induced fading and loss of gloss
- If EPP fails to perform, the damaged portion of the vehicle will be treated.
- Rental reimbursement should vehicle need treatment
- Renewable
- Transferable to next owner

Interior:

- Makes clean up easy
- Creates a barrier against stains
- Delays fading
- Extends life of fabric seats and carpet
- Protects against premature aging of leather and vinyl

> [Click here to view legal disclaimer](#)